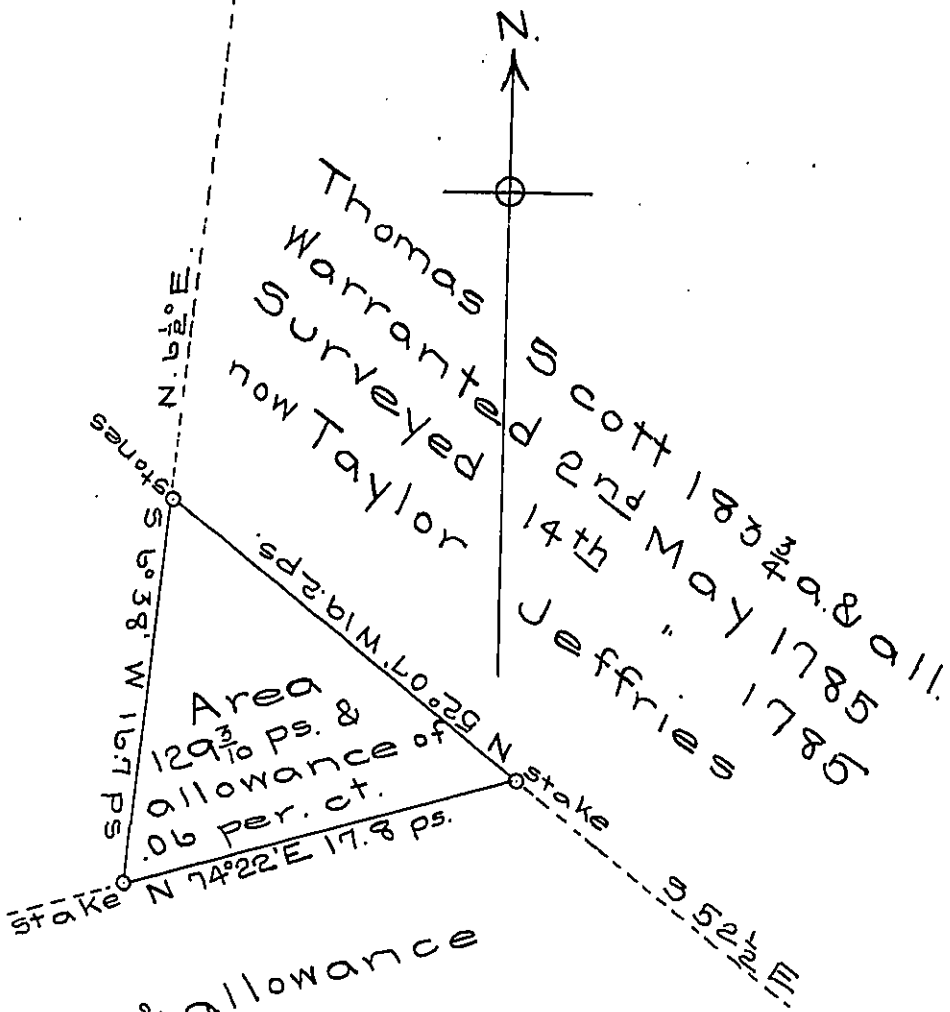


Wm Whitesides 294 1/2 a. & allowance
 Warranted 24th Aug. 1784
 Surveyed 4th Oct. 1784
 now Lydia Tracy



Hugh Jackson 273 a. & allowance
 Warranted 7th Nov. 1785
 Surveyed 15th Dec. 1785
 Now Mary Crabb

Situate in Menallen township Fayette County Pa. containing 129.3 perches and allowance of six per. cent. unimproved timber land. Surveyed for Samuel C. Rockwell the 28th day of April 1891 on a warrant dated the 25th day of February 1891. Courses are adjusted to County Meridian. Scale 10 ps. per inch

S. M. Foust C.S.

Thomas J. Stewart Esq.
 Secy Int. Affairs

IN TESTIMONY that the above is a copy of the original remaining on file in the Department of Internal Affairs of Pennsylvania, made conformably to an Act of Assembly approved the 16th day of February, 1833, I have hereunto set my Hand and caused the Seal of said Department to be affixed at Harrisburg, this twentieth day of September 1906.

Loach Brown
 Secretary of Internal Affairs.